



## **ANOGEN - A Division of YES Biotech Laboratories Ltd.**

2355 Derry Road East, Unit 23, Mississauga, ON L5S 1V6 • Tel: (905) 677-9221 • Fax: (905) 677-0023

### **Mouse anti-Human PML monoclonal Antibody [B3E9] Datasheet**

<b>Catalogue No</b>	MO-T40010A
<b>Product name</b>	Purified mouse anti-human PML ring finger domain monoclonal antibody [B3E9]
<b>Clone No</b>	B3E9
<b>Product type</b>	Primary antibody
<b>Description</b>	Mouse anti-human promyelocytic leukemia protein (PML) antibody, affinity purified.
<b>Target protein</b>	Human PML and PML/RAR $\alpha$ chimera
<b>Immunogen</b>	Recombinant partial human PML
<b>Specificity</b>	This antibody recognizes normal PML proteins of lower molecular weight, and also recognizes the high molecular weight PML/RAR $\alpha$ chimeric protein in promyelocytic leukemia patients.
<b>Reactivity</b>	Human, others not tested
<b>Clonality</b>	Monoclonal
<b>Source</b>	Mouse
<b>Subclass</b>	IgG1
<b>Light chain</b>	Kappa
<b>Formulation</b>	Lyophilized in pH 7.4, 0.01M PBS. To reconstitute, add appropriate volume of dH <sub>2</sub> O to reach a final antibody concentration of 1mg/ml.
<b>Applications</b>	Dilute 1:2,000 for Western blotting to differentiate normal PML and chimeric PML/RAR $\alpha$ molecules based on their molecular weight.
<b>Storage</b>	Store in aliquots at -20°C. Avoid repeated freeze/thaw cycles
<b>Research</b>	Life science research.
<b>References</b>	If research is published using this product, please inform Anogen in order to cite the reference on this datasheet. Anogen will provide any product of choice as gratitude.

### **Experimental data**

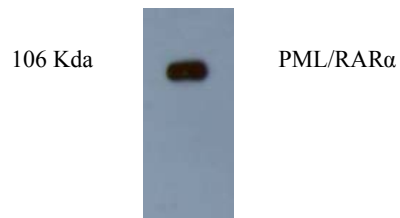
**This product is for LABORATORY RESEARCH USE and further manufacture only, and can not be administrated to human and animals for use in diagnostic and therapeutic procedures.**

**Manufactured by ANOGEN - A Division of YES Biotech Laboratories Limited**



**ANOGEN** - A Division of YES Biotech Laboratories Ltd.  
2355 Derry Road East, Unit 23, Mississauga, ON L5S 1V6 • Tel: (905) 677-9221 • Fax: (905) 677-0023

Fig.1 Western blot analysis of extracts from K562 cells using anti-PML monoclonal antibody.



**This product is for LABORATORY RESEARCH USE and further manufacture only,  
and can not be administrated to human and animals for use in diagnostic and  
therapeutic procedures.**

**Manufactured by ANOGEN - A Division of YES Biotech Laboratories Limited**